

AMZS d.o.o.  
Cenitve in ostali pregledi vozil  
Dunajska 128a  
1000 Ljubljana

NLB Lease&Go d.o.o.  
Flajšmanova ulica 3  
1000 Ljubljana

## CENILNO POROČILO

OSEBNI AVTOMOBIL (M1)  
ŠKODA OCTAVIA / 2.0 / TDI AUT.  
VIN: TMBAJ7NX3LY034021

Ljubljana, 03.04.2026

## IZJAVA CENILCA

---

Po svojem najboljšem poznavanju in prepričanju izjavljam, da:

- so v cenilnem poročilu uporabljeni podatki in informacije preverjeni v skladu z možnostmi ter uporabljeni v dobri veri, pri čemer verjamem in zaupam v njihovo točnost
- so prikazane analize, mnenja in sklepi omejeni samo s predpostavkami in omejevalnimi okoliščinami ter predstavljajo moje osebne, nepristranske in strokovne analize, mnenja in sklepe
- nimam sedanjih ali prihodnjih interesov v zadevi, ki je predmet tega cenilnega poročila, ter nimam osebnih interesov in nisem pristranski glede oseb, katerih se cenilno poročilo tiče
- je cenitev vozila opravljena na osnovi pregleda vozila in s tem poročilom ne prevzemam odgovornosti za prikrite napake na vozilu, ki jih v sklopu takšnega pregleda ni možno ugotoviti,
- cenilno poročilo odraža stanje vozila v trenutku pregleda, zato ne prevzemam odgovornosti za kasnejše poškodbe ali nastale nepravilnosti na vozilu, ki bi nastale po pregledu,
- plačilo za mojo storitev v zvezi z cenilnim poročilom ni vezano na vnaprej določen izid zadeve, ki bi bil ugoden za stranke v sporu ali doseganje dogovorjenega rezultata cenilnega poročila ali pojava kakršnega koli dogodka, povezanega s tako obliko dogovora
- mi ni nihče nudil pomembne strokovne pomoči oziroma, da so osebe, ki so mi podajale kakršnekoli informacije in podatke, navedene v poglavju Viri informacij

Blaž Boštjančič

Cenilec avtomobilske stroke



## 1. NAMEN IZDELAVE CENILNEGA POROČILA

Na podlagi naročila smo si ogledali: OSEBNI AVTOMOBIL (M1) znamke: ŠKODA OCTAVIA / 2.0 / TDI AUT. s številko šasije: TMBAJ7NX3LY034021 z namenom:

- da določimo trenutno stanje vozila ( iztrošenost, ohranjenost, okvare)
- da določimo in ovrednotimo poškodbe ter nastalo škodo na vozilu
- kalkulacija naj bo narejena po tehnologiji proizvajalca in pravil stroke
- da določimo njegovo tržno vrednost, upoštevajoč starost vozila, prevožene kilometre, poškodbe na vozilu, tržni položaj ter splošno ohranjenost vozila

Pregled je opravil Blaž Boštjančič dne 02.04.2026 v podjetju , MAKŠE TRANSPORTI.

## 2. PREDMETNO VOZILO (TEHNIČNI PODATKI)

### 2.1. TEHNIČNI PODATKI

VRSTA VOZILA	OSEBNI AVTOMOBIL (M1)
ZNAMKA	ŠKODA
KOMERCIALNA OZNAKA VOZILA	OCTAVIA / 2.0 / TDI AUT.
REG. ŠT.	/
ŠTEVILKA ŠASIJE	TMBAJ7NX3LY034021
PROSTORNINA MOTORJA	1968 ccm
MOČ MOTORJA	110 kW
VRSTA GORIVA	Dizel
DATUM PRVE REGISTRACIJE	12.08.2020
BARVA VOZILA	navaden - RDECA - SREDNJA
ŠTEVILO SEDEŽEV	5
MASA VOZILA	1465 kg
NAJVEČJA TEHNIČNO DOVOLJENA MASA VOZILA	2000 kg
OBLIKA KAROSERIJE	LIMUZINA

### 2.2. POMEMBNI PODATKI:

STAROST VOZILA OB PREGLEDU	5 let in 8 mesecev
ŠT. PREVOŽENIH KM OB OGLEDU	128432 km

Slika 1: prednja leva diagonala vozila (S01)



Slika 2: zadnja desna diagonala vozila (S02)



Slika 3: VIN številka: TMBAJ7NX3LY034021



Slika 4: število kilometrov: 128432 km



### 3. UGOTOVITVE OB PREGLEDU

#### 3.1. ZUNANJOST:

Na vozilu je vidnih nekaj odrgnin in poškodb pločevine in odbijačev. Te poškodbe znižujejo tržno vrednost tega rabljenega vozila.

Opažene poškodbe:

Slika R01: Sprednji odbijač

Slika R02: Pokrov motorja

Slika R03: Streha

Slika R04: Al platišče

Slika R05: Al platišče

Slika R06: Zadnji odbijač

Slika R07: Zadnji odbijač-ščitnik

Slika R08: Stranica desna

Slika R09: Al platišče

Slika R10: Zadnja vrata desna

Slika R11: Al platišče

Slika R12: Blatnik desni

Slika R13: Vetrobransko steklo

Slika R01-1: Poškodba laka

Slika R02-1: Poškodba

Slika R03-1: Poškodba

Slika R04-1: Popraskano

Slika R05-1: Poškodba

Slika R06-1: Vdolbina in poškodba laka

Slika R07-1: Poškodba

Slika R08-1: Vdolbine

Slika R09-1: Poškodba

Slika R10-1: Poškodba

Slika R11-1: Popraskano

Slika R12-1: Poškodba laka

Slika R13-1: Poškodba

Slika R01: Sprednji odbijač



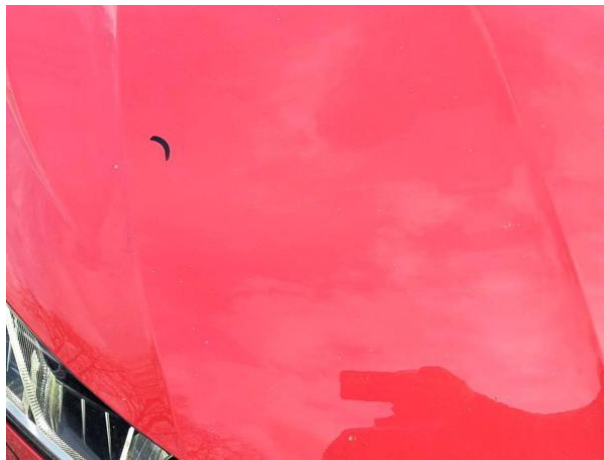
Slika R01-1: Poškodba laka



Slika R02: Pokrov motorja



Slika R02-1: Poškodba



Slika R03: Streha



Slika R03-1: Poškodba



Slika R04: Al platišče



Slika R04-1: Popraskano



Slika R05: Al platišče



Slika R05-1: Poškodba



Slika R06: Zadnji odbijač



Slika R06-1: Vdolbina in poškodba laka



Slika R07: Zadnji odbijač-ščitnik



Slika R07-1: Poškodba



Slika R08: Stranica desna



Slika R08-1: Vdolbine



Slika R09: Al platišče



Slika R09-1: Poškodba



Slika R10: Zadnja vrata desna



Slika R10-1: Poškodba



Slika R11: Al platišče



Slika R11-1: Popraskano



Slika R12: Blatnik desni



Slika R12-1: Poškodba laka



Slika R13: Vetrobransko steklo



Slika R13-1: Poškodba



Ostala stekla in stekla vzratnih ogledal niso poškodovana.  
Brisalci so ustrezni.

Pnevmatike na vozilu:

Lega	Znamka in tip	Vrsta	Dimenzija	Starost	Globina profila
1. os	KUMHO SOLUS 4S	zimske	225/45/18	DOT 02/23	4
2. os	KUMHO SOLUS 4S	zimske	225/45/18	DOT 02/23	4

Pnevmatike so dimenzijsko ustrezne, starostno primerne in z dovolj profila.

Slika G01: 1. os dimenzija



Slika G02: 1. os starost



Slika G03: 2. os dimenzija



Slika G04: 2. os starost



Pri pregledu debeline laka sem ugotovil, da vozilo **ni** bilo reparaturno lakirano.

### 3.2. NOTRANJOST:

Notranjost vozila je v solidnem stanju.  
Ugotovljene pomanjkljivosti:

- Čiščenje notranjosti vozila - umazanija
- Sprednji levi sedež - poškodba
- Sprednji levi sedež - poškodba
- Notranja obloga vrat - poškodba

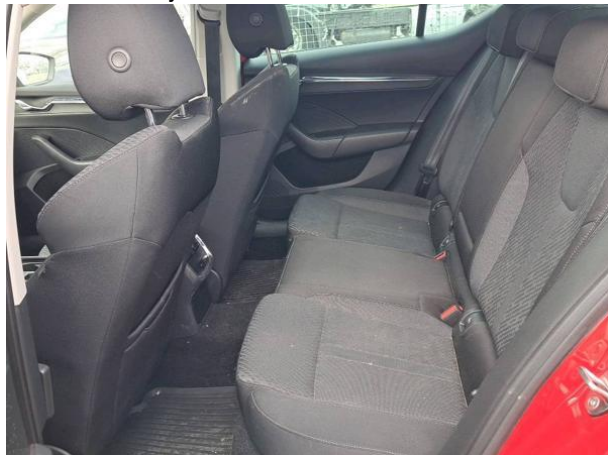
Slika N01: spredaj levo



Slika N02: volan z opremo



Slika N03: zadaj levo



Slika N04: prtljažnik



Slika N05: Čiščenje notranjosti vozila



Slika N05-1: Umazanija



Slika N06: Sprednji levi sedež



Slika N06-1: Poškodba



Slika N07: Sprednji levi sedež



Slika N07-1: Poškodba



Slika N08: Notranja obloga vrat



Slika N08-1: Poškodba



### 3.3. MOTORNI PROSTOR

Zadnji servis opravljen 04.08.2025 pri 123426 km, glede na servisni interval ni potrebno opraviti servisa.

**Ob priklopu na diagnostično orodje so bile ugotovljene napake.**

Slika M01: motorni prostor



Slika M02: motor



Slika M03: servisni listek



Slika M04: servisna knjižica



Slika M05:



### 3.4. DOKUMENTACIJA

V vozilu je:

- Prometno dovoljenje
- Ključ, rezervni ključ
- Navodila za uporabnika

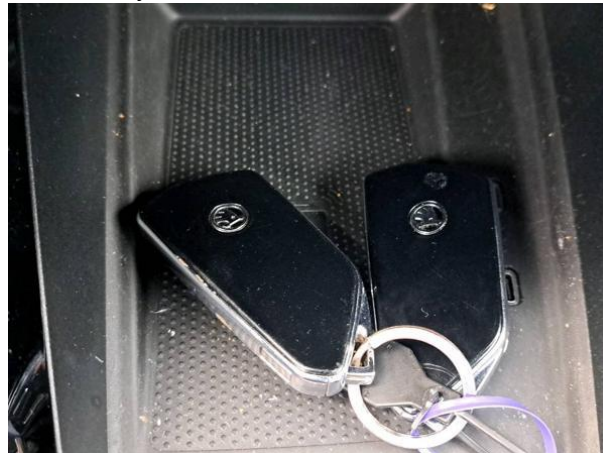
Manjka:

- Homologacija

Slika D01: navodila za uporabo



Slika D02: ključi



### 3.5. OPREMA

V vozilu se nahaja naslednja oprema:

- Obvezna oprema
- Navigacija
- GSM inštalacija

Slika O01: obvezna oprema



Slika O07: navigacija



Slika O08:



Slika O09:



Slika O10:



Slika O11:



Slika O12:



Slika O13:



### 3.6. PREIZKUŠNJA VOZILA

**Motor:** Vžge in deluje.

**Klima:** Ni bilo možno preveriti.

**Svetlobna telesa:** Delujejo.

**Diagnostika:** Opravljena - zaznane napake. ( PRILOGA 3)

**Testna vožnja:** Neopravljena.

**Podvozje:** Podvozja v danih razmerah ni bilo mogoče pregledati.

Morebitne nepravilnosti na vozilu, ki bi se pokazale z daljšo vožnjo ni bilo možno ugotoviti in tudi niso upoštevane pri vrednotenju vozila.

# Vehicle Diagnostic Report

The Report is created by **SmartSafe**

## Repair Shop

Shop Name: Cenitve-AMZS

Address: Dunajska cesta 128a Ljubljana Slovenija

Zip Code: 1000

Telephone:

Email: cenitve@amzs.si

SN: 988150001890

Test Time: 2026-04-02 01:47:30

Technician Name:

Customer Name:

## Vehicle Information

Make: Skoda

VIN: TMBAJ7NX3LY034021

Vehicle Software Version: V28.56

Diagnostic Application Version: V1.01.003

## System fault code(Pre-Repair)

03 Brake Electronics 21 problems exist


1.C102D00	Tire Pressure Warning	Passive/Sporadic
2.C10CE29	-AUTO HOLD- Button - Range/Performance	Passive/Sporadic
3.U164C00	Distance Regulation Control Module - No Communication	Passive/Sporadic
4.U04B500	Brake Electronics Control Module 2-Implausible Signal	Passive/Sporadic
5.U103F00	Brake Booster Control Module - Implausible Signal	Passive/Sporadic
6.U04B500	Brake Electronics Control Module 2-Implausible Signal	Passive/Sporadic
7.U04B500	Brake Electronics Control Module 2-Implausible Signal	Passive/Sporadic
8.U103F00	Brake Booster Control Module - Implausible Signal	Passive/Sporadic
9.U04B500	Brake Electronics Control Module 2-Implausible Signal	Passive/Sporadic

10.U101D00	Power Steering Control Module - No Communication	Passive/Sporadic
11.C114602	Tire Pressure Monitoring System (TPMS) - Signal Malfunction	Passive/Sporadic
12.C114654	Tire Pressure Monitoring System (TPMS) - No Basic Setting	Passive/Sporadic
13.C118700	Brake Booster	Passive/Sporadic
14.C118700	Brake Booster	Passive/Sporadic
15.U103E00	Brake Booster Control Module - No Communication	Passive/Sporadic
16.U300100	Control Module Improper Shutdown	Passive/Sporadic
17.B1168F2	Steering Angle Sensor - No Initialization	Passive/Sporadic
18.C100C29	Electro-Mechanical Parking Brake Button - Range/Performance	Passive/Sporadic
19.U101100	Supply Voltage - Voltage Too Low	Passive/Sporadic
20.C107529	ESP Operation - Range/Performance	Passive/Sporadic
21.P056200	System Voltage - Low Voltage	Passive/Sporadic
<b>08 Climate Control Module 4 problems exist</b>		
1.B10CD00	Function Limitation Due To Energy Management	Passive/Sporadic
2.B10AF04	Air Quality Sensor - Faulty	Passive/Sporadic
3.U140000	Function Restriction - Function Restriction Due To Low Voltage	Passive/Sporadic
4.U112100	Databus Missing Message	Passive/Sporadic
<b>09 Electronic Central Electric 3 problems exist</b>		
1.U112100	Databus Missing Message	Active/Static
2.B147918	Remote Control Key 1 - Voltage Too Low	Active/Static
3.B147A18	Remote Control Key 2 - Voltage Too Low	Active/Static
<b>13 Distance Regulation 56 problems exist</b>		
		
1.C110BF0	Adaptive Cruise Control Sensor - Limited Visibility	Passive/Sporadic
2.C110BF0	Adaptive Cruise Control Sensor - Limited Visibility	Passive/Sporadic
3.U112300	Databus Error Value Received	Passive/Sporadic
4.U112100	Databus Missing Message	Passive/Sporadic
5.U112100	Databus Missing Message	Passive/Sporadic
6.U112100	Databus Missing Message	Passive/Sporadic
7.U112100	Databus Missing Message	Passive/Sporadic
8.U112100	Databus Missing Message	Passive/Sporadic

9.U112100	Databus Missing Message	Passive/Sporadic
10.U112100	Databus Missing Message	Passive/Sporadic
11.U112100	Databus Missing Message	Passive/Sporadic
12.U112100	Databus Missing Message	Passive/Sporadic
13.U112100	Databus Missing Message	Passive/Sporadic
14.U112100	Databus Missing Message	Passive/Sporadic
15.U112100	Databus Missing Message	Passive/Sporadic
16.U112100	Databus Missing Message	Passive/Sporadic
17.U112100	Databus Missing Message	Passive/Sporadic
18.U112100	Databus Missing Message	Passive/Sporadic
19.U112100	Databus Missing Message	Passive/Sporadic
20.U112100	Databus Missing Message	Passive/Sporadic
21.U112300	Databus Error Value Received	Passive/Sporadic
22.U112100	Databus Missing Message	Passive/Sporadic
23.C110300	Adaptive Cruise Control Sensor - Misadjusted	Passive/Sporadic
24.U112200	Databus Implausible Message	Passive/Sporadic
25.U112300	Databus Error Value Received	Passive/Sporadic
26.U112200	Databus Implausible Message	Passive/Sporadic
27.U112300	Databus Error Value Received	Passive/Sporadic
28.U112300	Databus Error Value Received	Passive/Sporadic
29.U112100	Databus Missing Message	Passive/Sporadic
30.U112200	Databus Implausible Message	Passive/Sporadic
31.U112100	Databus Missing Message	Passive/Sporadic
32.U112100	Databus Missing Message	Passive/Sporadic
33.U112100	Databus Missing Message	Passive/Sporadic
34.U112100	Databus Missing Message	Passive/Sporadic
35.U112100	Databus Missing Message	Passive/Sporadic
36.U112100	Databus Missing Message	Passive/Sporadic
37.U112100	Databus Missing Message	Passive/Sporadic
38.U112100	Databus Missing Message	Passive/Sporadic
39.U112100	Databus Missing Message	Passive/Sporadic

40.U112100	Databus Missing Message	Passive/Sporadic
41.U112300	Databus Error Value Received	Passive/Sporadic
42.U112300	Databus Error Value Received	Passive/Sporadic
43.U112200	Databus Implausible Message	Passive/Sporadic
44.U112200	Databus Implausible Message	Passive/Sporadic
45.C110300	Adaptive Cruise Control Sensor - Misadjusted	Passive/Sporadic
46.B18D3F4	Activatable Functions - Authentication Of a Transmission Failed	Passive/Sporadic
47.U14C500	CAN Driving Assistance - Faulty	Passive/Sporadic
48.U112300	Databus Error Value Received	Passive/Sporadic
49.U112100	Databus Missing Message	Passive/Sporadic
50.U112100	Databus Missing Message	Passive/Sporadic
51.U112100	Databus Missing Message	Passive/Sporadic
52.U112200	Databus Implausible Message	Passive/Sporadic
53.U112200	Databus Implausible Message	Passive/Sporadic
54.U112300	Databus Error Value Received	Passive/Sporadic
55.U112300	Databus Error Value Received	Passive/Sporadic
56.U112200	Databus Implausible Message	Passive/Sporadic
15 Airbag 1 problem exist		
1.U112100	Databus Missing Message	Passive/Sporadic
17 Instrument Cluster 4 problems exist		
1.U105400	Information Electronics Control Module 1 - No Communication	Passive/Sporadic
2.U105400	Information Electronics Control Module 1 - No Communication	Passive/Sporadic
3.U105400	Information Electronics Control Module 1 - No Communication	Passive/Sporadic
4.B200FF0	Internal Malfunction	Passive/Sporadic
19 Data Bus OBD Interface 21 problems exist		
1.U122F00	Ethernet Databus Branch 4 - No Communication	Active/Static
2.B201200	Data Record Implausible	Active/Static
3.U104C00	Rearview Camera System Control Module - No Communication	Active/Static
4.U111300	Function Limitation Due To Received Malfunction Value	Passive/Sporadic

5.U15DB00	Data Bus Driver Assistance Systems - Faulty	Passive/Sporadic
6.U15D800	Data Bus Driver Assistance Systems - Single Wire Mode	Passive/Sporadic
7.U016400	Lost Communication With HVAC Control Module	Passive/Sporadic
8.U023500	Lost Communication With - Cruise Control Front Distance Range Sensor	Passive/Sporadic
9.U105400	Information Electronics Control Module 1 - No Communication	Passive/Sporadic
10.U123000	Ethernet Databus Branch 5 - No Communication	Passive/Sporadic
11.U123100	Ethernet Databus Branch 6 - No Communication	Passive/Sporadic
12.U164300	Ethernet Rearview Camera System Control Module - No Communication	Passive/Sporadic
13.U164500	Ethernet Information Electronics Control Module 1 - No Communication	Passive/Sporadic
14.B1802F1	NV-Energy Management - Alarm Triggered	Passive/Sporadic
15.U112300	Databus Error Value Received	Passive/Sporadic
16.U112100	Databus Missing Message	Passive/Sporadic
17.B114B96	Left Multifunction Buttons On Steering Wheel - Internal Malfunction	Passive/Sporadic
18.U140000	Function Restriction - Function Restriction Due To Low Voltage	Passive/Sporadic
19.B18D3F4	Activatable Functions - Authentication Of a Transmission Failed	Passive/Sporadic
20.B18D3F1	Activatable Functions - Communication Between Control Modules Aborted	Passive/Sporadic
21.B18D3F3	Activatable Functions - Faulty Vehicle Configuration	Passive/Sporadic
23 Brake Boost 2 problems exist		
1.U300100	Control Module Improper Shutdown	Passive/Sporadic
2.P06B800	Internal Control Module Non-Volatile Random Access Memory - (NVRAM) Error	Passive/Sporadic
2B Steering Column Lock 1 problem exist		
1.U112200	Databus Implausible Message	Passive/Sporadic
42 Driver's Door Electronics 1 problem exist		
1.B122D29	Lock Unit For Central Locking - Range/Performance	Passive/Sporadic
44 Power Steering 4 problems exist		
1.U101100	Supply Voltage - Voltage Too Low	Passive/Sporadic
2.U140A00	Terminal 30 - Open Circuit	Passive/Sporadic
3.B1168F2	Steering Angle Sensor - No Initialization	Passive/Sporadic

4.U112100	Databus Missing Message	Passive/Sporadic
4B Multi-Function Module 2 problems exist		
1.U112300	Databus Error Value Received	Passive/Sporadic
2.C118E00	Active Fog Mode	Passive/Sporadic
5F Information Electronics 1 3 problems exist		
1.B106713	Right Rear Bass Speaker - Open Circuit	Passive/Sporadic
2.B18CA01	Antenna For Coupling Antenna For Mobile Devices - Electrical Error	Passive/Sporadic
3.U111000	Function Restriction Due To Communication Interruption	Active/Static
75 Emergency Call Module And Communication Unit 3 problems exist		
1.U112100	Databus Missing Message	Active/Static
2.U151300	Secure Onboard Communication - Key Not Available	Passive/Sporadic
3.B200049	Faulty Control Module	Active/Static
76 Parking Aid 7 problems exist		
1.B107BF0	Rear Parking Aid Sensor - Function Limitation Due To Environmental Influences	Passive/Sporadic
2.B10FCF0	Front Parking Aid Sensor - Function Limitation Due To Environmental Influences	Passive/Sporadic
3.B1AE200	Driver Assistance Systems Audio Output	Passive/Sporadic
4.U112100	Databus Missing Message	Passive/Sporadic
5.U112300	Databus Error Value Received	Passive/Sporadic
6.U112300	Databus Error Value Received	Passive/Sporadic
7.B10FCF0	Front Parking Aid Sensor - Function Limitation Due To Environmental Influences	Passive/Sporadic
A5 Front Sensor For Drivers Assistant Systems 1 problem exist 		
1.C110400	Camera Malfunction	Passive/Sporadic
B7 Interface For Access/Start System 2 problems exist		
1.B116C13	Front Passenger Exterior Door Handle Touch Sensor - Open Circuit	Passive/Sporadic
2.B116D13	Left Rear Outside Door Handle Touch Sensor - Open Circuit	Passive/Sporadic
D6 Light Control Left 2 11 problems exist		
1.U140700	Terminal 30 - Implausible Signal	Passive/Sporadic
2.U120100	Data Bus - No Communication	Passive/Sporadic
3.U112100	Databus Missing Message	Passive/Sporadic

4.U112100	Databus Missing Message	Passive/Sporadic
5.U112100	Databus Missing Message	Passive/Sporadic
6.U112100	Databus Missing Message	Passive/Sporadic
7.0xFF020116	Not Define	
8.U112100	Databus Missing Message	Passive/Sporadic
9.U112200	Databus Implausible Message	Passive/Sporadic
10.U112100	Databus Missing Message	Passive/Sporadic
11.U112300	Databus Error Value Received	Passive/Sporadic

D7 Light Control Right 2 11 problems exist

1.U140700	Terminal 30 - Implausible Signal	Passive/Sporadic
2.U120100	Data Bus - No Communication	Passive/Sporadic
3.U112100	Databus Missing Message	Passive/Sporadic
4.U112100	Databus Missing Message	Passive/Sporadic
5.U112100	Databus Missing Message	Passive/Sporadic
6.U112100	Databus Missing Message	Passive/Sporadic
7.0xFF020116	Not Define	
8.U112100	Databus Missing Message	Passive/Sporadic
9.U112200	Databus Implausible Message	Passive/Sporadic
10.U112100	Databus Missing Message	Passive/Sporadic
11.U112300	Databus Error Value Received	Passive/Sporadic

The following systems are OK:

1.01 Engine Electronics

2.02 Transmission Electronics

3.52 Passenger's Door Electronics

4.BB Rear Drivers Side Door Electronics

5.BC Rear Passenger Side Door Electronics

6.811E Burglary Protection Control Module FL

7.811F Burglary Protection Control Module FR

8.8120 Burglary Protection Control Module RL

9.8121 Burglary Protection Control Module RR